

AMERICAN MOTORS PARTS CATALOG

GROUP 10 FRONT SUSPENSION - STEERING GEAR

| DESCRIPTION | GROUP AND FIGURE NO. | GROUP NO. |
|--|---------------------------------------|-----------|
| ADAPTER, Power Steering Pump | | 10.460 |
| ADAPTER, Power Steering Pump Body Cover | | 10.445 |
| ADJUSTER, Steering Gear Worm Ball Bearing | 10-15, 10-16 | 10.326 |
| ARM, Front Suspension Lower Control | 10-4, 10-5 | 10.045 |
| ARM, Front Suspension Upper Control | 10-6, 10-7 | 10.066 |
| ARM, Steering Knuckle | 10-3, 10-9, 10-9A | 10.035 |
| ARM, Steering Linkage Idler | 10-8, 10-9, 10-9A, 10-10 | 10.108 |
| ARM, Steering Linkage Pitman | 10-8, 10-9, 10-9A, 10-10, 10-16 | 10.104 |
| BAR, Front Suspension Lower Control Arm Pivot | 10-4 | 10.050 |
| BAR, Front Suspension Upper Control Arm Pivot | 10-6 | 10.069 |
| BEARING, Front Suspension Upper Control Arm Trunnion | 10-2, 10-7 | 10.042 |
| BEARING, Power Steering Pump Drive Shaft | | 10.440 |
| BEARING, Steering Gear Jacket Tube Upper | 3-10, 10-16A | 10.344 |
| BEARING, Steering Gear Worm Ball | 10-15, 10-16 | 10.316 |
| BEARING, Steering Gear Worm Roller | 10-14, 10-15, 10-16 | 10.322 |
| BEARING, Steering Knuckle Pin Thrust | 10-2, 10-3 | 10.023 |
| BODY, Power Steering Pump | 10-18 | 10.430 |
| BOLT, Front Suspension Lower Control Arm Pivot | 10-4, 10-5 | 10.050 |
| BOLT, Front Suspension Upper Control Arm Pivot | 10-7, 11-5 | 10.069 |
| BOLT, Power Steering Pump Body Adj. Plate to Cover..... | 10-18 | 10.455 |
| BOLT, Power Steering Pump Body To Cover | | 10.445 |
| BOLT, Steering Linkage Idler Arm Pivot | 10-8 | 10.112 |
| BRACE, Front Suspension Lower Control Arm Pivot Bar | | 10.051 |
| BRACE, Power Steering Pump Mounting Bracket | | 10.450 |
| BRACE, Steering Gear to Upper Control Arm Pivot Bar | | 10.357 |
| BRACKET, Front Suspension Sway Stabilizer Lower | 10-13 | 10.266 |
| BRACKET, Front Suspension to Sill Mounting | 10-1 | 10.003 |
| BRACKET, Power Cylinder to Sill Mounting | | 10.427 |
| BRACKET, Power Steering Pump Mounting | | 10.450 |
| BRACKET, Steering Linkage Idler Arm | 10-8, 10-10 | 10.114 |
| BUMPER, Front Suspension Upper Control Arm | 10-6, 10-7 | 10.068 |
| BUSHING, Front Suspension Lower Control Arm Pivot Bar | 10-4 | 10.050 |
| BUSHING, Front Suspension Lower Control Arm Trunnion | 10-4, 10-5 | 10.044 |
| BUSHING, Front Suspension Sway Stabilizer | 10-13 | 10.260 |
| BUSHING, Front Suspension Upper Control Arm Pivot Bar | 10-6 | 10.069 |
| BUSHING, Front Suspension Upper Control Arm Trunnion | 10-6, 10-7 | 10.042 |
| BUSHING, Steering Gear Housing Cross Shaft | 10-15, 10-16 | 10.307 |
| BUSHING, Steering Gear Jacket Tube Lower | 10-16A | 10.346 |
| BUSHING, Steering Linkage Idler Arm | 10-8 | 10.110 |
| BUSHING, Steering Linkage Idler Arm Pivot | 10-9, 10-9A, 10-10 | 10.112 |
| CAP, Steering Wheel | 3-13, 0-14 | 10.284 |
| CARRIER KIT, Power Steering Pump | 10-18 | 10.435 |
| CLAMP, Front Suspension Sway Stabilizer | 10-13 | 10.260 |
| CLAMP, Steering Gear Jacket Tube to Gear Housing Adapter . | | 10.348 |
| CLAMP, Steering Linkage Tie Rod Adjusting Tube | 10-8, 10-9, 10-9A, 10-11, 10-12 | 10.224 |
| COVER, Power Steering Pump Body | 10-18 | 10.445 |
| COVER, Power Steering Pump Oil Reservoir | 10-19 | 10.465 |
| COVER, Steering Gear Housing Cross Shaft | 10-14, 10-15, 10-16 | 10.300 |
| COVER, Steering Gear Housing Worm | 10-14 | 10.296 |
| COVER, Steering Linkage Cross Tube Ball Stud | 10-8, 10-10 | 10.254 |
| CROSSMEMBER, Front Suspension | 10-1 | 10.002 |
| CUP, Steering Gear Worm Roller Bearing | 10-14, 10-15, 10-16 | 10.324 |
| CUSHION, Front Suspension Sway Stabilizer | 10-13 | 10.260 |
| CYLINDER, Power Cylinder Piston Rod | 10-17 | 10.397 |
| CYLINDER, Power Steering Power | 10-17 | 10.395 |

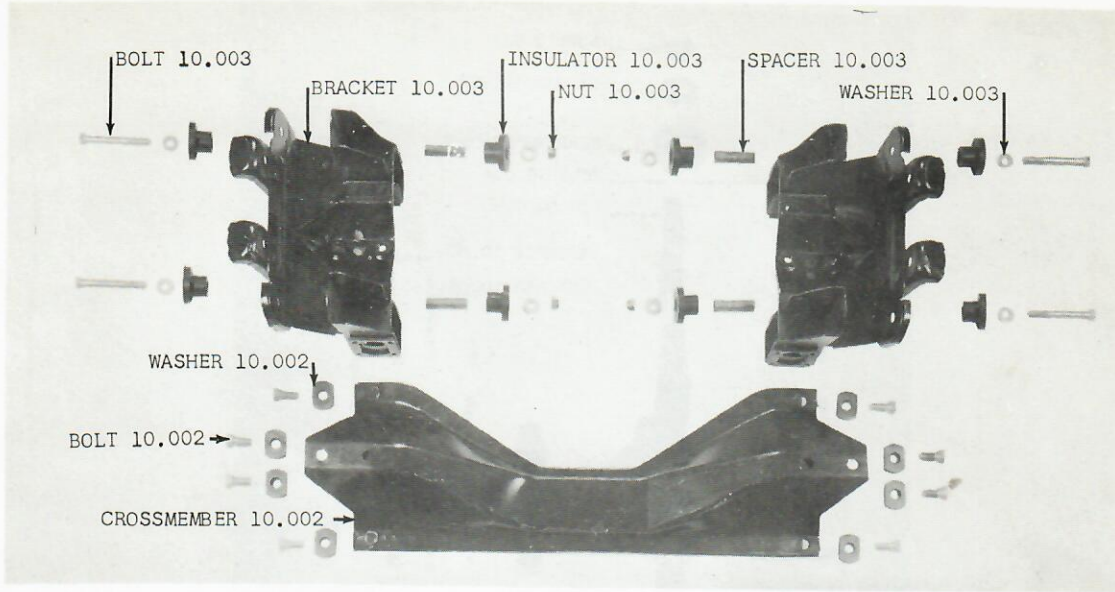
AMERICAN MOTORS PARTS CATALOG

| DESCRIPTION | GROUP AND FIGURE NO. | GROUP NO. |
|---|---------------------------------------|-----------|
| END, Steering Linkage Tie Rod | 10-8, 10-9, 10-9A, 10-11, 10-12 | 10.126 |
| GASKET, Steering Gear Housing Cross Shaft Cover | 10-14, 10-15, 10-16 | 10.302 |
| GEAR, Steering | 10-14, 10-15, 10-16 | 10.290 |
| GROMMET, Steering Gear Jacket Tube to Toeboard | 10-16A | 10.350 |
| GUIDE, Power Cylinder Piston Rod | 10-17 | 10.410 |
| HOSE, Power Steering Pump | 10-20 | 10.470 |
| HOUSING, Steering Gear | 10-14, 10-15, 10-16 | 10.292 |
| JACKET, Steering Gear Tube | 10-16A | 10.338 |
| LINKAGE, Steering | 10-8, 10-9, 10-9A, 10-10 | 10.100 |
| NUT, Steering Gear Tube | | 10.318 |
| NUT, Steering Knuckle Spindle | 10-3 | 10.007 |
| NUT, Steering Linkage Tie Rod End Dust Cover | 10-8, 10-9, 10-9A, 10-11, 10-12 | 10.234 |
| NUT, Steering Wheel to Steering Gear Tube | 10-15, 10-16, 3-12, 3-13 | 10.282 |
| OILER, Steering Linkage Cross Tube | 10-8, 10-10 | 10.252 |
| OILER, Steering Linkage Tie Rod End | 10-8, 10-11, 10-12 | 10.220 |
| PIN, Steering Knuckle | 10-2, 10-3 | 10.013 |
| PISTON, Power Cylinder Valve Spool Reaction | 10-17 | 10.398 |
| PLATE, Power Steering Pump Pulley | 10-18 | 10.455 |
| PLUG, Steering Gear Housing Oil Filler | 10-15, 10-16 | 10.294 |
| PLUG, Steering Linkage Cross Tube Adjusting | 10-8, 10-10 | 10.242 |
| PULLEY, Power Steering Pump | 10-18 | 10.455 |
| PUMP, Power Steering | 10-18 | 10.430 |
| RESERVOIR, Power Steering Pump Oil | 10-19 | 10.465 |
| ROD, Power Cylinder Mounting Bracket to Rear Cross- member Brace | | 10.427 |
| ROD, Power Cylinder Piston | 10-17 | 10.405 |
| ROD, Steering Linkage Idler Arm to Idler Arm Tie | 10-9, 10-9A | 10.135 |
| ROD, Steering Linkage Idler Arm to Steering Arm Tie | 10-9, 10-9A | 10.130 |
| ROD, Steering Linkage Tie | 10-8, 10-9, 10-9A, 10-11, 10-12 | 10.122 |
| ROTOR SET, Power Steering Pump | 10-18 | 10.435 |
| RUBBER, Steering Linkage Tie Rod End Dust Cover | 10-9, 10-9A, 10-11, 10-12 | 10.232 |
| SCREW, Steering Gear Cross Shaft Adjusting | 10-14, 10-15, 10-16 | 10.308 |
| SCREW, Steering Gear to Body | | 10.354 |
| SCREW, Turning Radius Stop | 10-8 | 10.010 |
| SEAL, Steering Gear Cross Shaft Oil | 10-15, 10-16 | 10.310 |
| SEAL, Steering Gear Tube Oil | 10-15 | 10.320 |
| SEAL, Steering Knuckle Pin | 10-2, 10-3 | 10.013 |
| SEAL, Steering Linkage Tie Rod End To Idler Arm Dust | 10-9A | 10.232 |
| SEAT, Steering Linkage Cross Tube Ball | 10-8, 10-10 | 10.244 |
| SHAFT, Power Steering Pump Drive | 10-18 | 10.440 |
| SHAFT, Steering Gear Cross | 10-14, 10-15, 10-16 | 10.306 |
| SHIM, Steering Gear Housing Worm Cover | 10-14 | 10.298 |
| SHIM KIT, Steering Gear Cross Shaft Adjusting Screw | 10-15, 10-16 | 10.309 |
| SPACER, Steering Gear Jacket Tube to Instrument Panel | | 10.339 |
| SPACER, Steering Linkage Cross Tube | 10-8, 10-10 | 10.248 |
| SPINDLE, Steering Knuckle | 10-3 | 10.004 |
| SPRING, Steering Linkage Cross Tube Safety Plug | 10-8, 10-10 | 10.246 |
| STABILIZER, Front Suspension Sway | 10-13 | 10.260 |
| STUD, Steering Linkage Cross Tube Ball | 10-10 | 10.253 |
| SUPPORT, Steering Linkage Anti-Roll | 10-8 | 10.118 |
| TRUNNION, Front Suspension Lower Control Arm | 10-2, 10-4, 10-5 | 10.044 |
| TRUNNION, Front Suspension Upper Control Arm | 10-2, 10-6, 10-7 | 10.042 |
| TUBE, Power Steering Cylinder Outer | 10-17 | 10.396 |
| TUBE, Steering Gear | 10-14, 10-15, 10-16 | 10.314 |
| TUBE, Steering Gear Jacket | 10-16A | 10.338 |
| TUBE, Steering Linkage Cross | 10-8, 10-10 | 10.240 |
| TUBE, Steering Linkage Tie Rod Adjusting | 10-8, 10-9, 10-9A, 10-11, 10-12 | 10.222 |

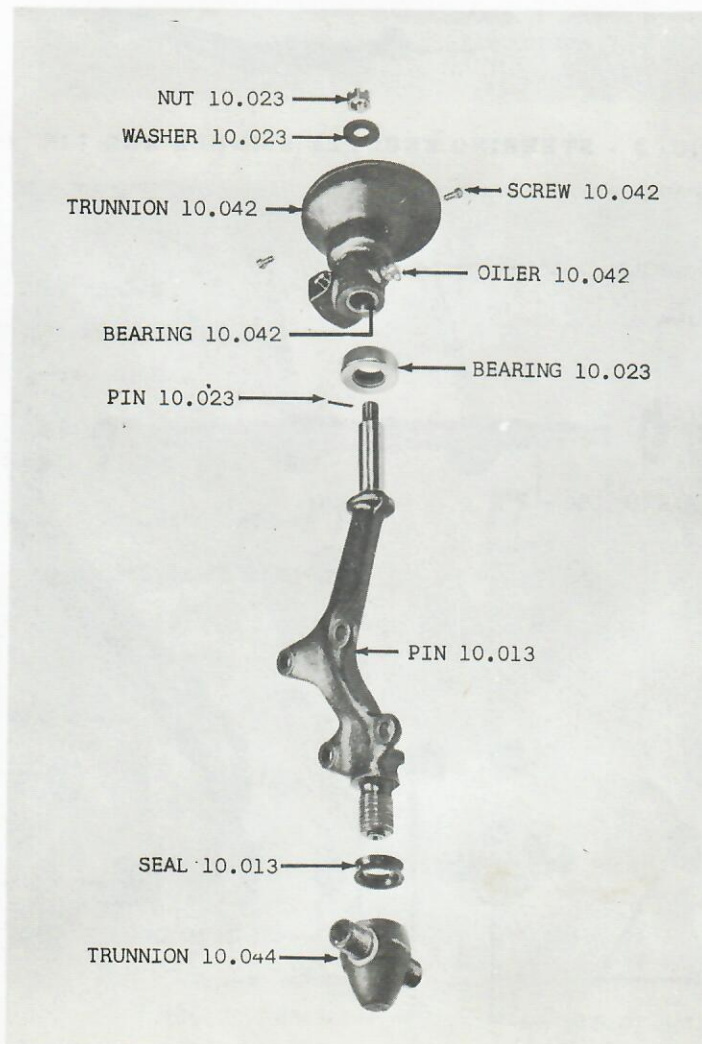
AMERICAN MOTORS PARTS CATALOG

| DESCRIPTION | GROUP AND FIGURE NO. | GROUP NO. |
|---|------------------------|-----------|
| VALVE, Power Steering Pump Body Cover | 10-18 | 10.445 |
| WASHER, Steering Linkage Cross Tube | 10-8, 10-10 | 10.250 |
| WHEEL, Steering | 3-12, 3-13, 0-14 | 10.280 |

AMERICAN MOTORS PARTS CATALOG

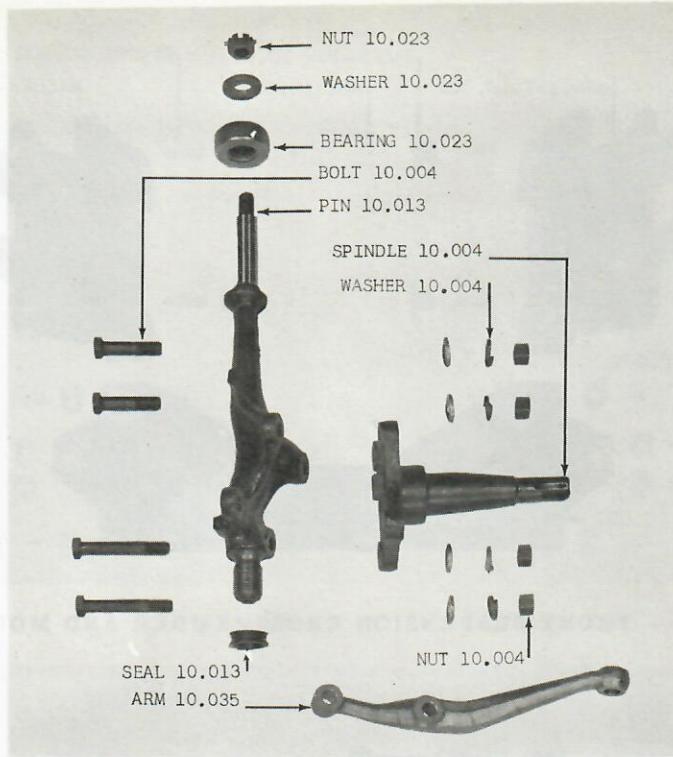


GROUP 10 - FIG. 1 - FRONT SUSPENSION CROSSMEMBER AND MOUNTING 10-20-80

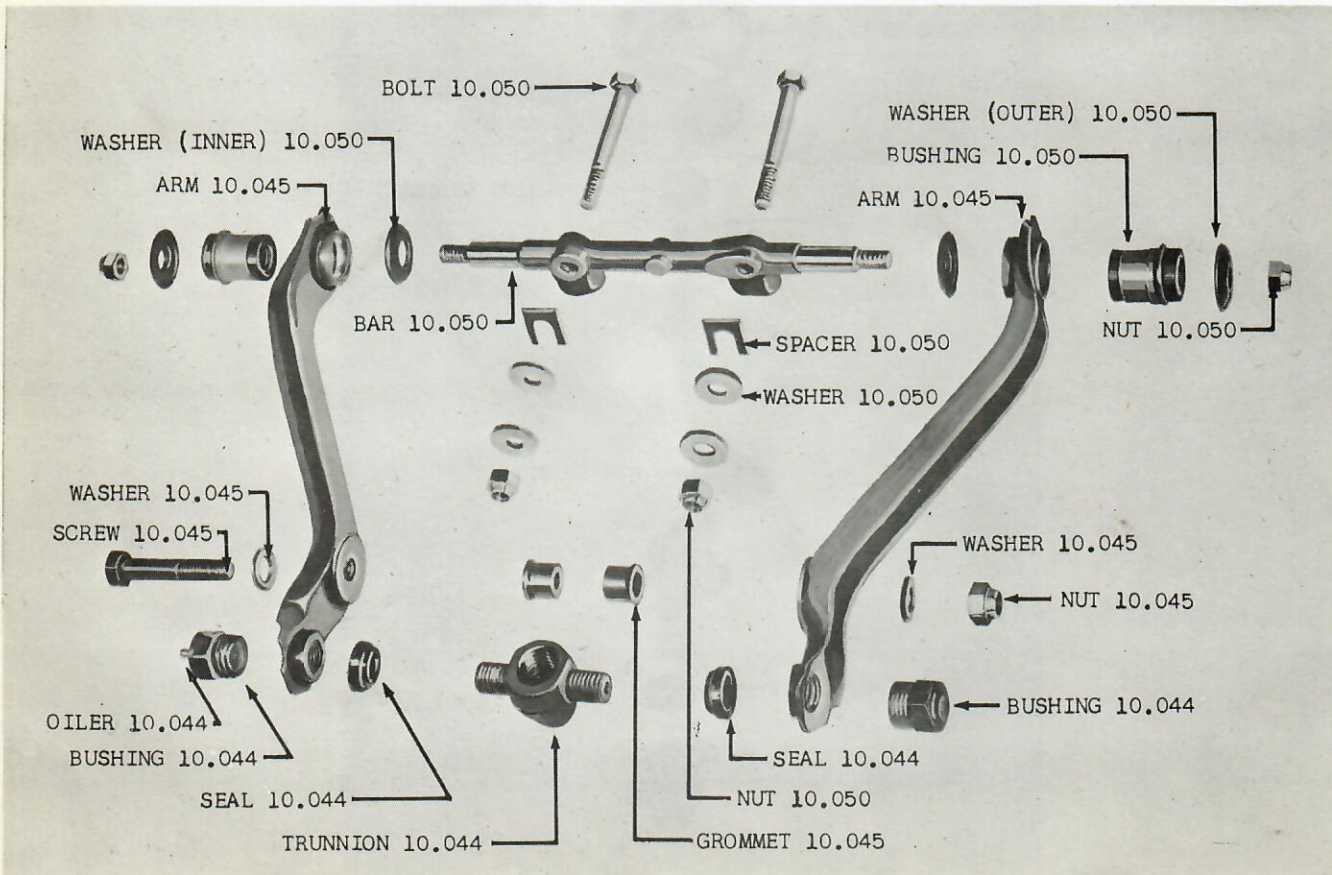


GROUP 10 - FIG. 2 - STEERING KNUCKLE PIN 01

AMERICAN MOTORS PARTS CATALOG

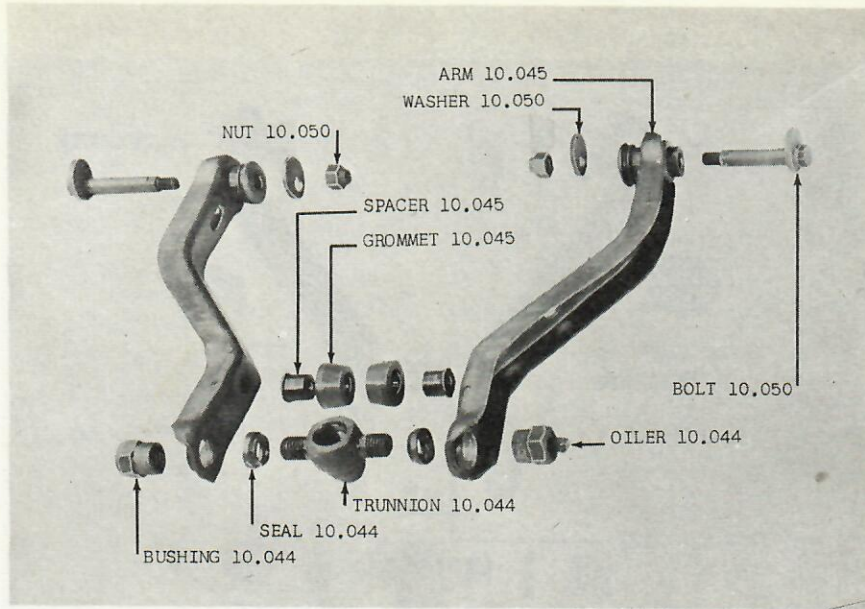


GROUP 10 - FIG. 3 - STEERING KNUCKLE SPINDLE AND PIN 10-20-80

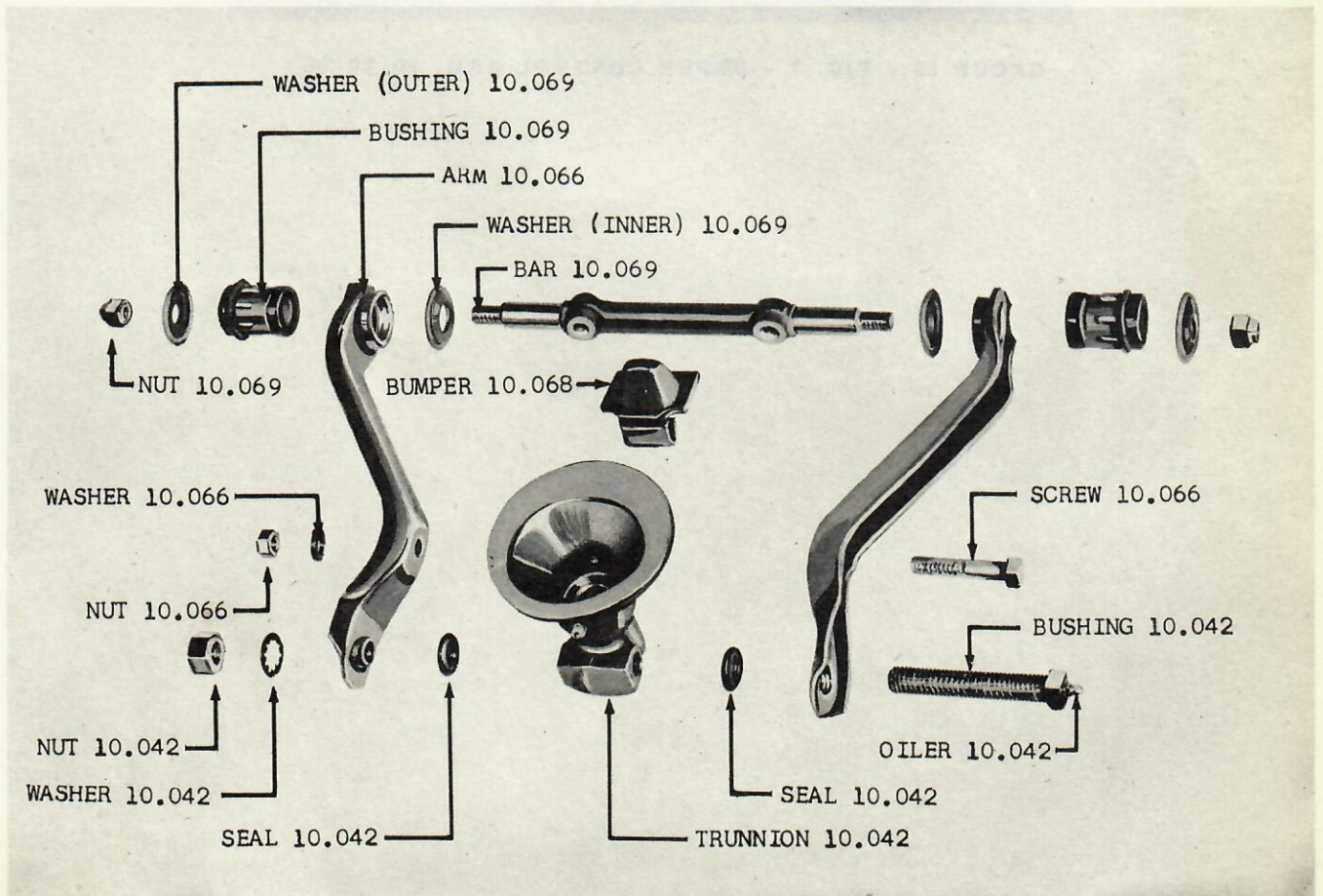


GROUP 10 - FIG. 4 - LOWER CONTROL ARM 01

AMERICAN MOTORS PARTS CATALOG

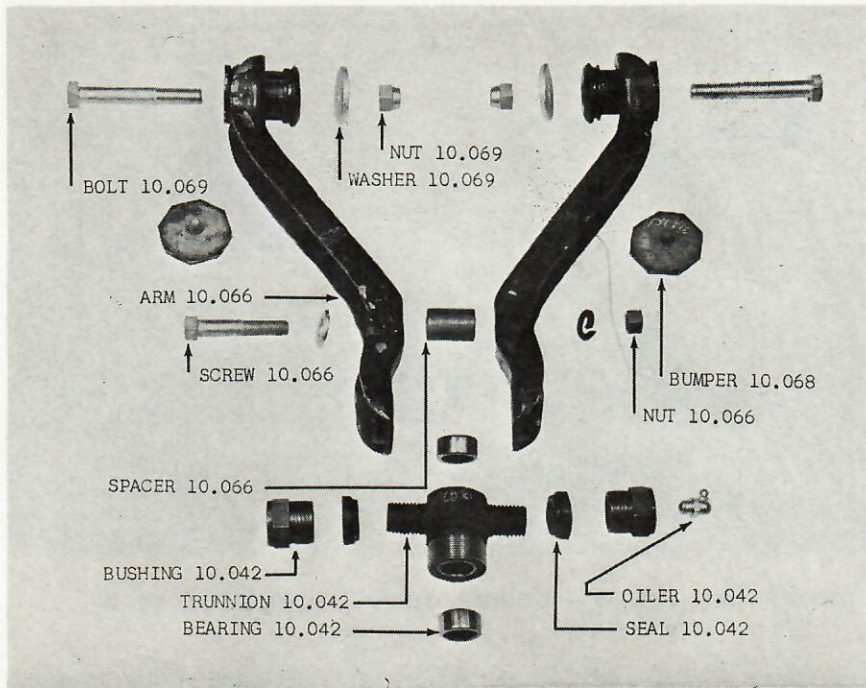


GROUP 10 - FIG. 5 - LOWER CONTROL ARM 10-20-80



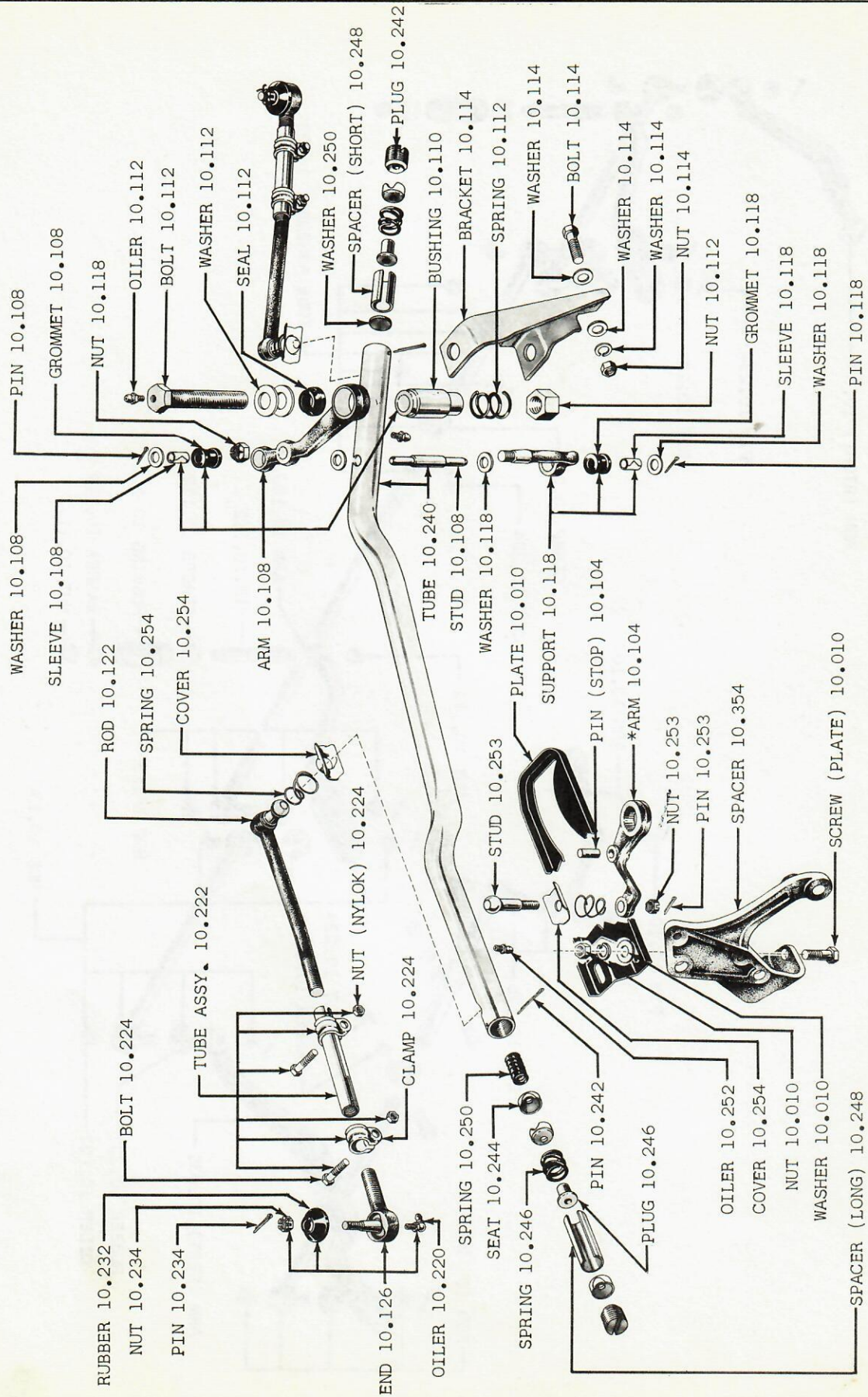
GROUP 10 - FIG. 6 - UPPER CONTROL ARM 01

AMERICAN MOTORS PARTS CATALOG



GROUP 10 - FIG. 7 - UPPER CONTROL ARM 10-20-80

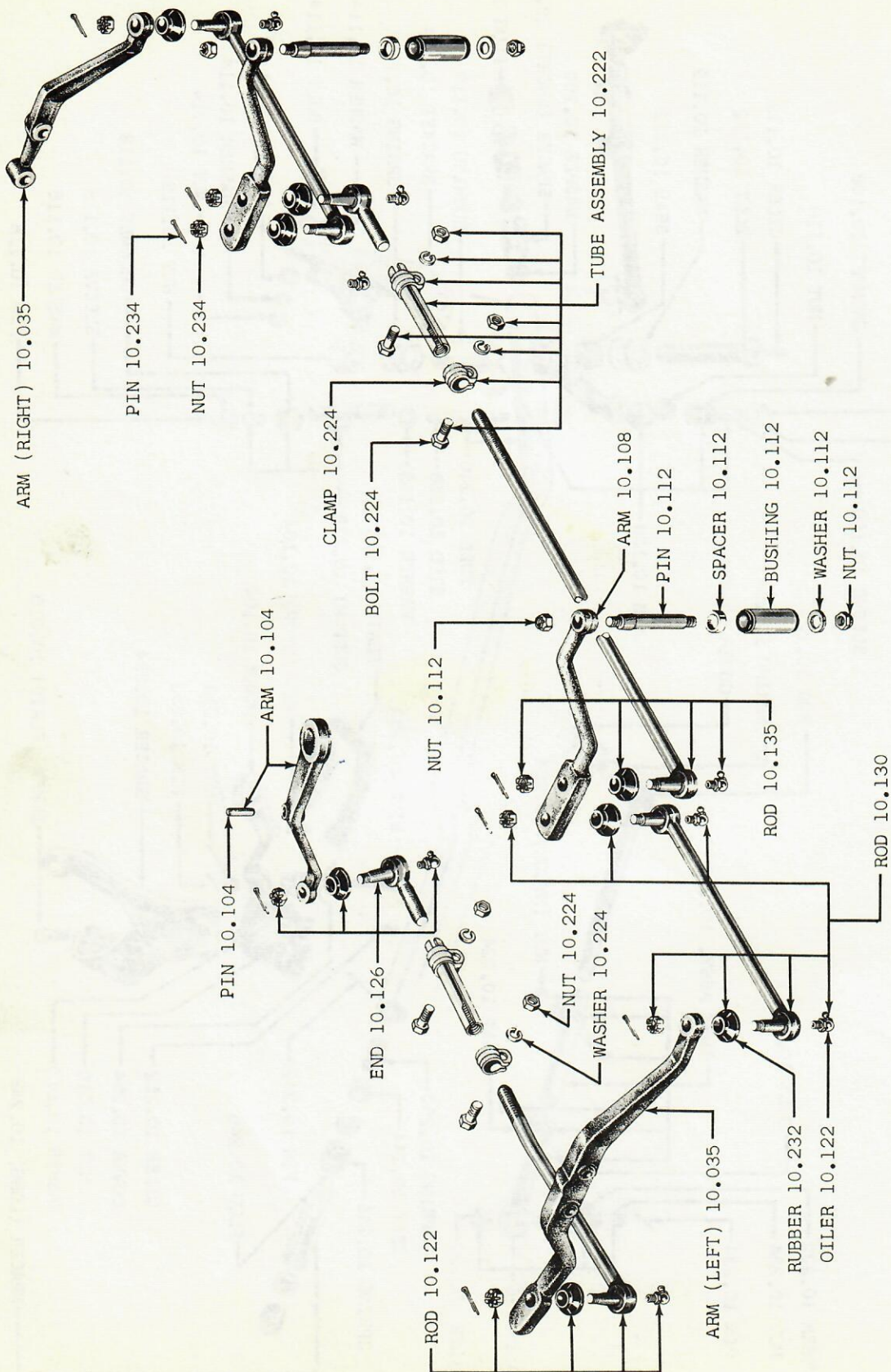
AMERICAN MOTORS PARTS CATALOG



* ARM 10.104 INCLUDES PIN (STOP) 10.104

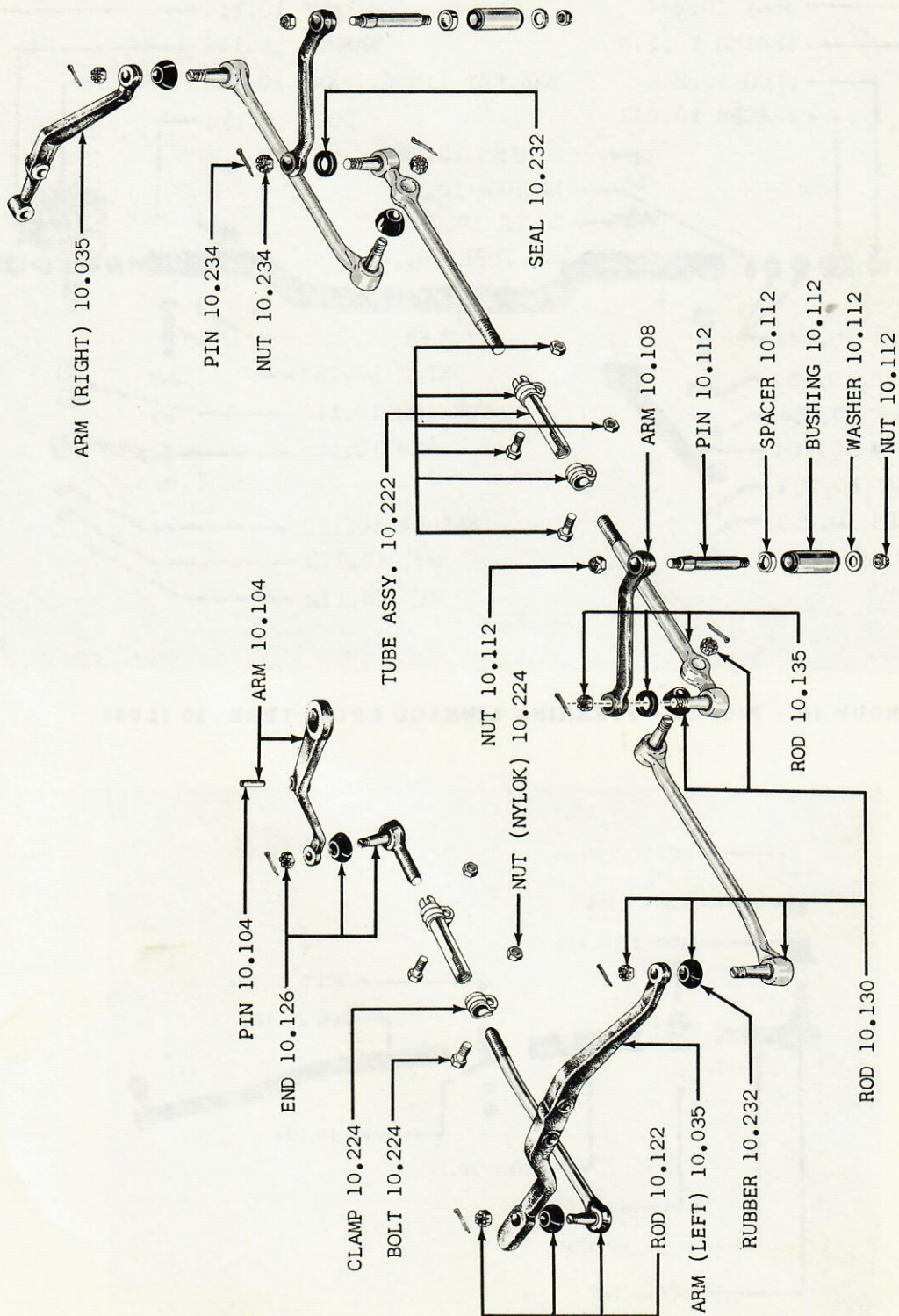
GROUP 10 - FIG. 8 - STEERING LINKAGE 10

AMERICAN MOTORS PARTS CATALOG



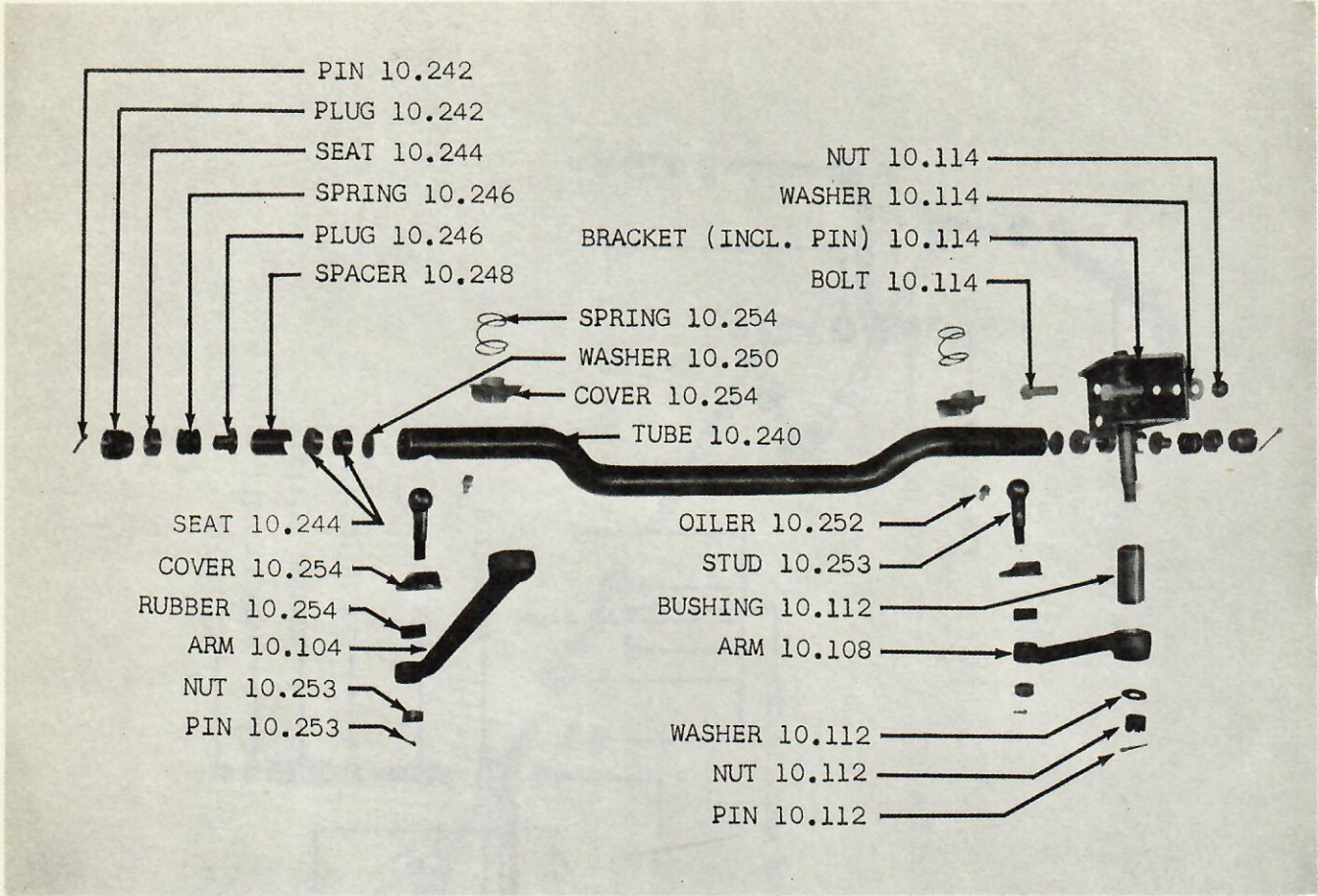
GROUP 10 - FIG. 9 - STEERING LINKAGE 20 (LHD-LPS)(NOTE 10.122-1: TYPE 1)

AMERICAN MOTORS PARTS CATALOG

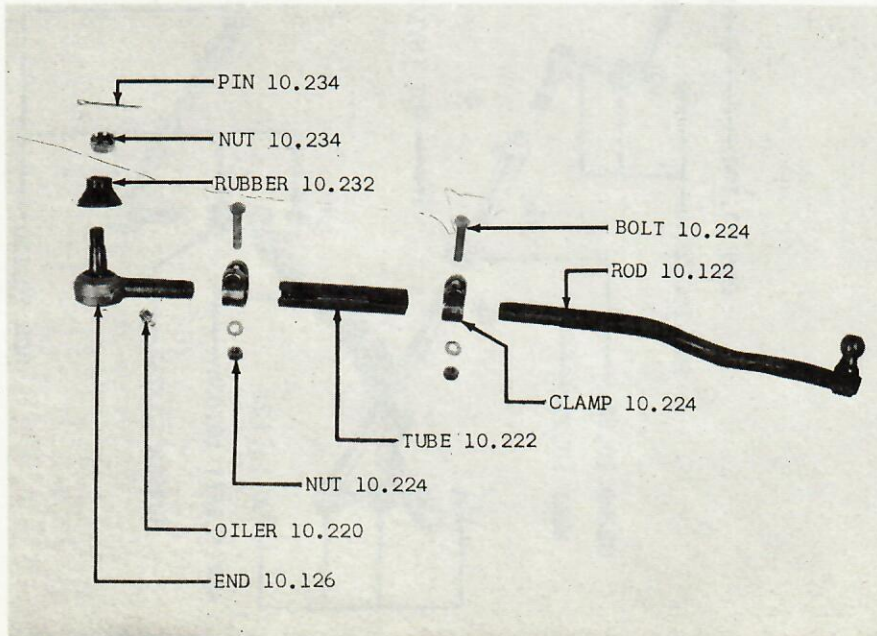


GROUP 10 - FIG. 9A - STEERING LINKAGE 20 (LHD-LPS)(NOTE 10.122-1: TYPE 2)

AMERICAN MOTORS PARTS CATALOG

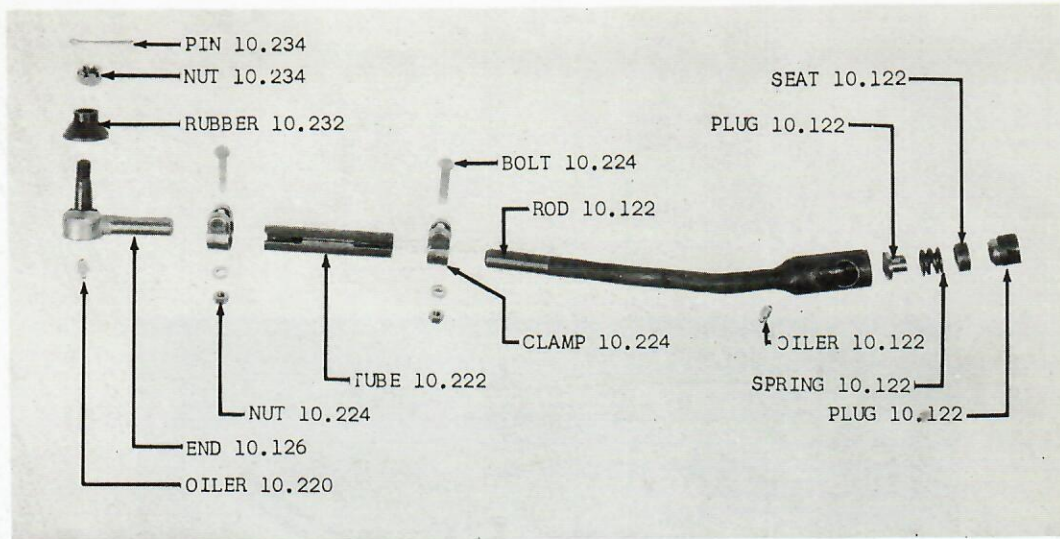


GROUP 10 - FIG. 10 - STEERING LINKAGE CROSS TUBE 80 (LPS)

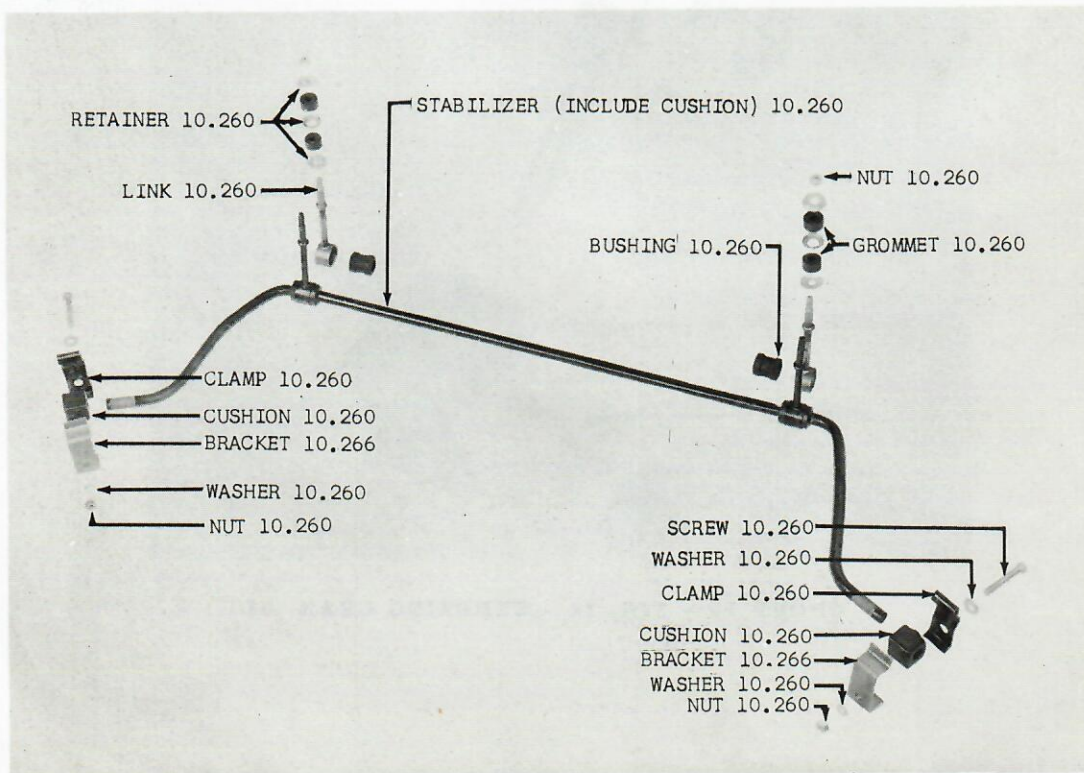


GROUP 10 - FIG. 11 - STEERING LINKAGE TIE ROD 01-10-20: 80 (LPS)

AMERICAN MOTORS PARTS CATALOG

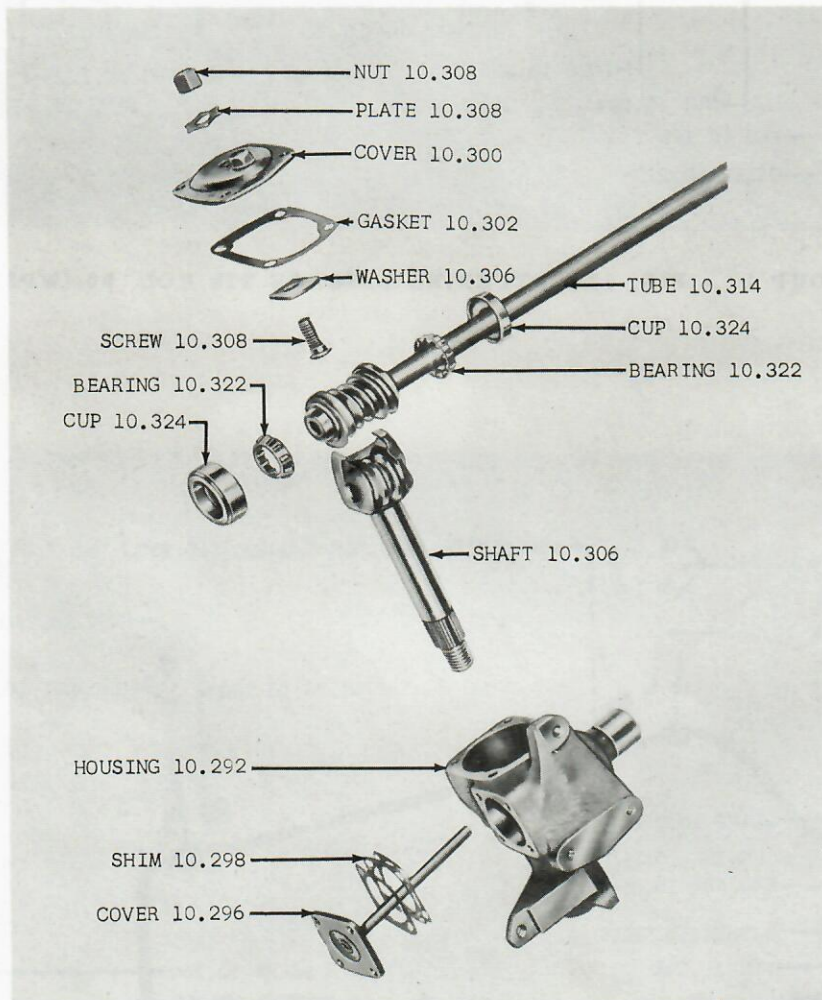


GROUP 10 - FIG. 12 - STEERING LINKAGE TIE ROD 80 (WPS)



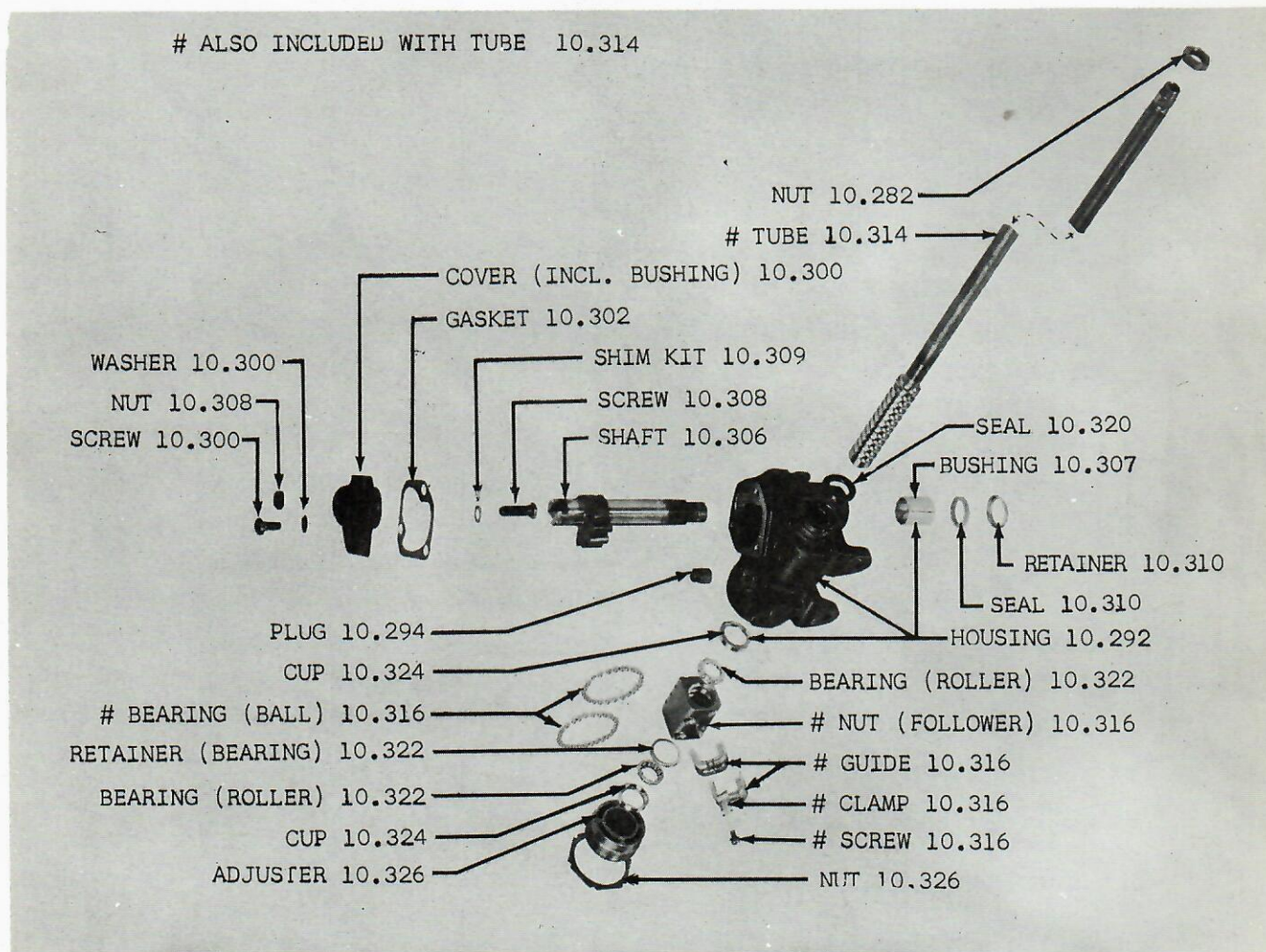
GROUP 10 - FIG. 13 - FRONT SUSPENSION SWAY STABILIZER 80

AMERICAN MOTORS PARTS CATALOG



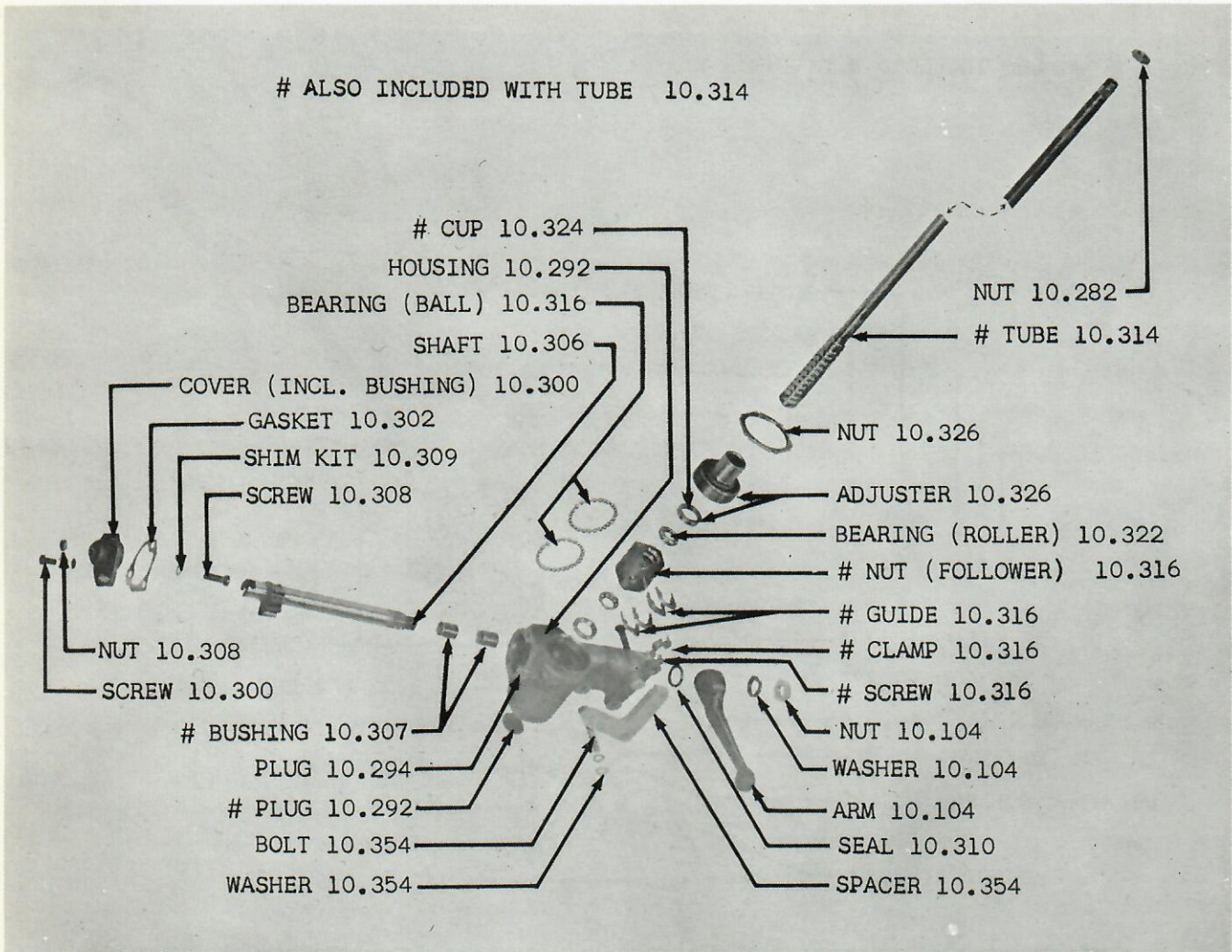
GROUP 10 - FIG. 14 - STEERING GEAR 01

AMERICAN MOTORS PARTS CATALOG



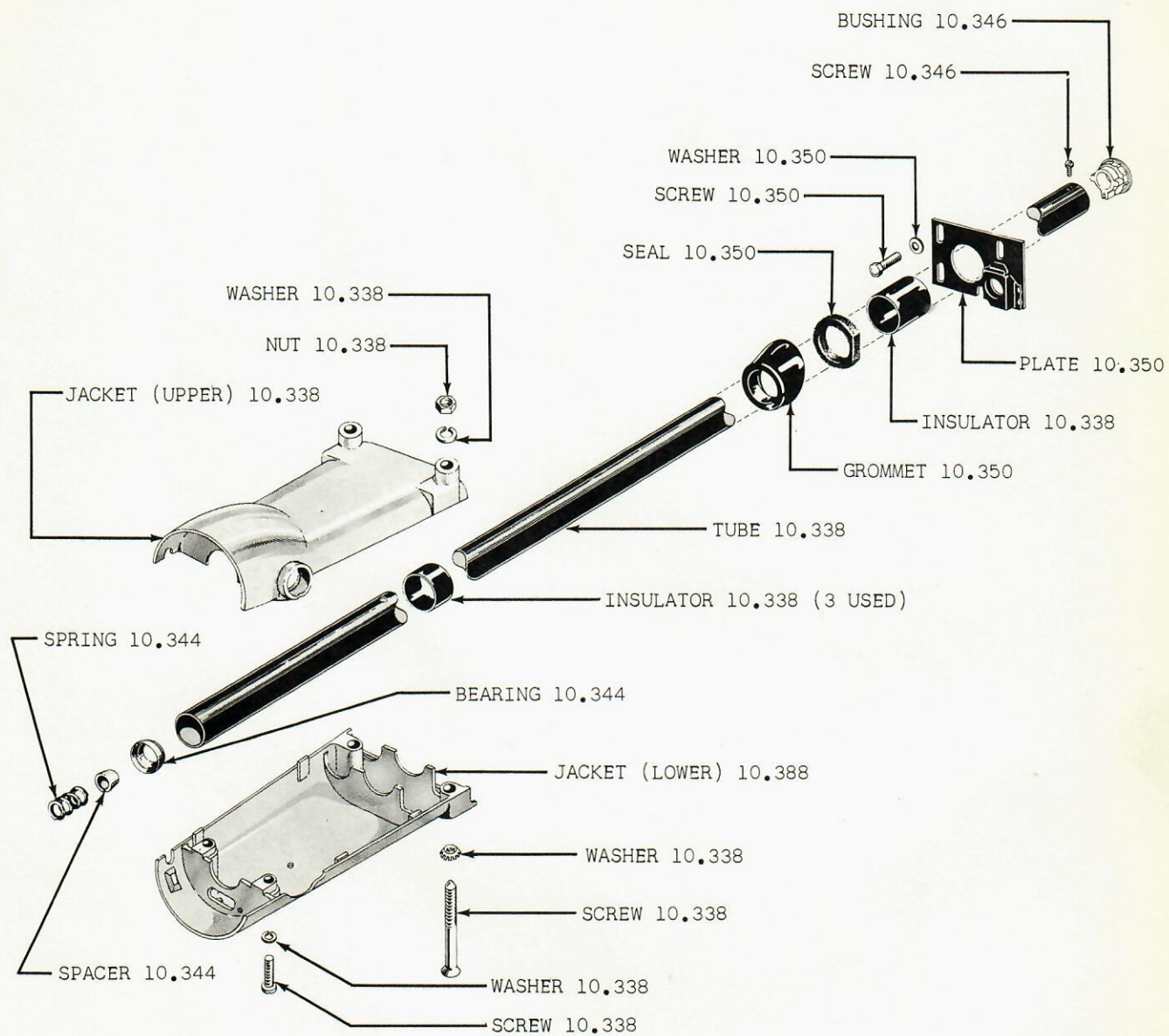
GROUP 10 - FIG. 15 - STEERING GEAR 10 (LHD): 20

AMERICAN MOTORS PARTS CATALOG



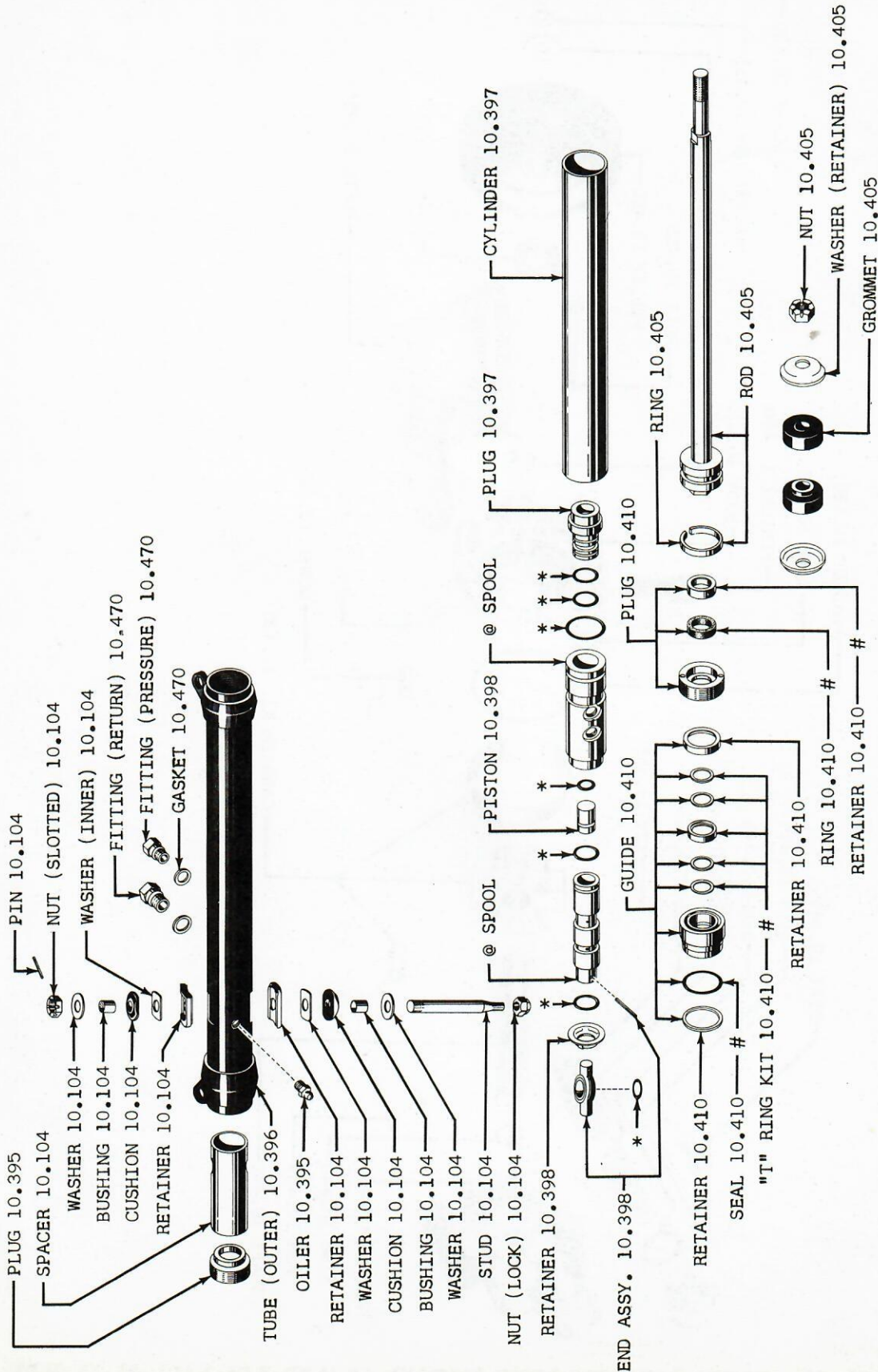
GROUP 10 - FIG. 16 - STEERING GEAR 80 (LHD)

AMERICAN MOTORS PARTS CATALOG



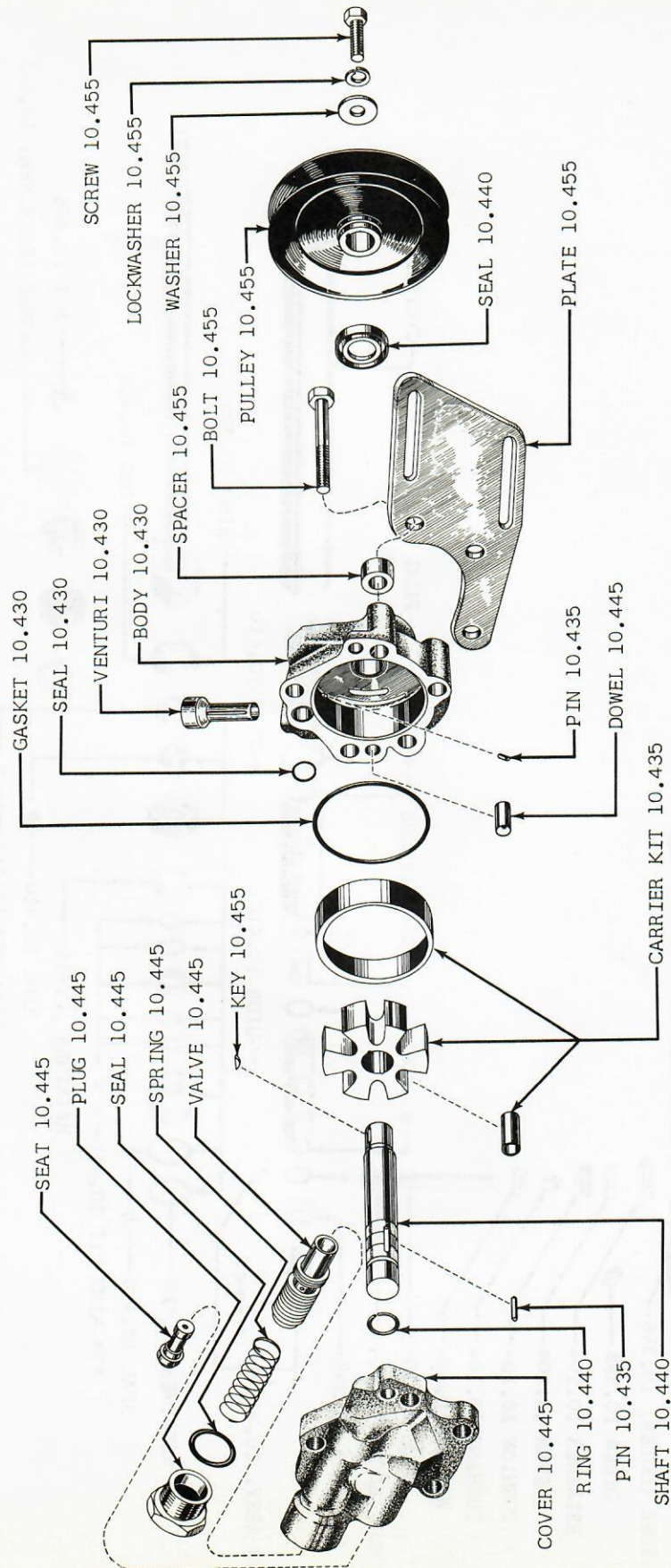
GROUP 10 - FIG. 16A - STEERING GEAR JACKET AND TUBE 10-20: TYPICAL OF 80

AMERICAN MOTORS PARTS CATALOG



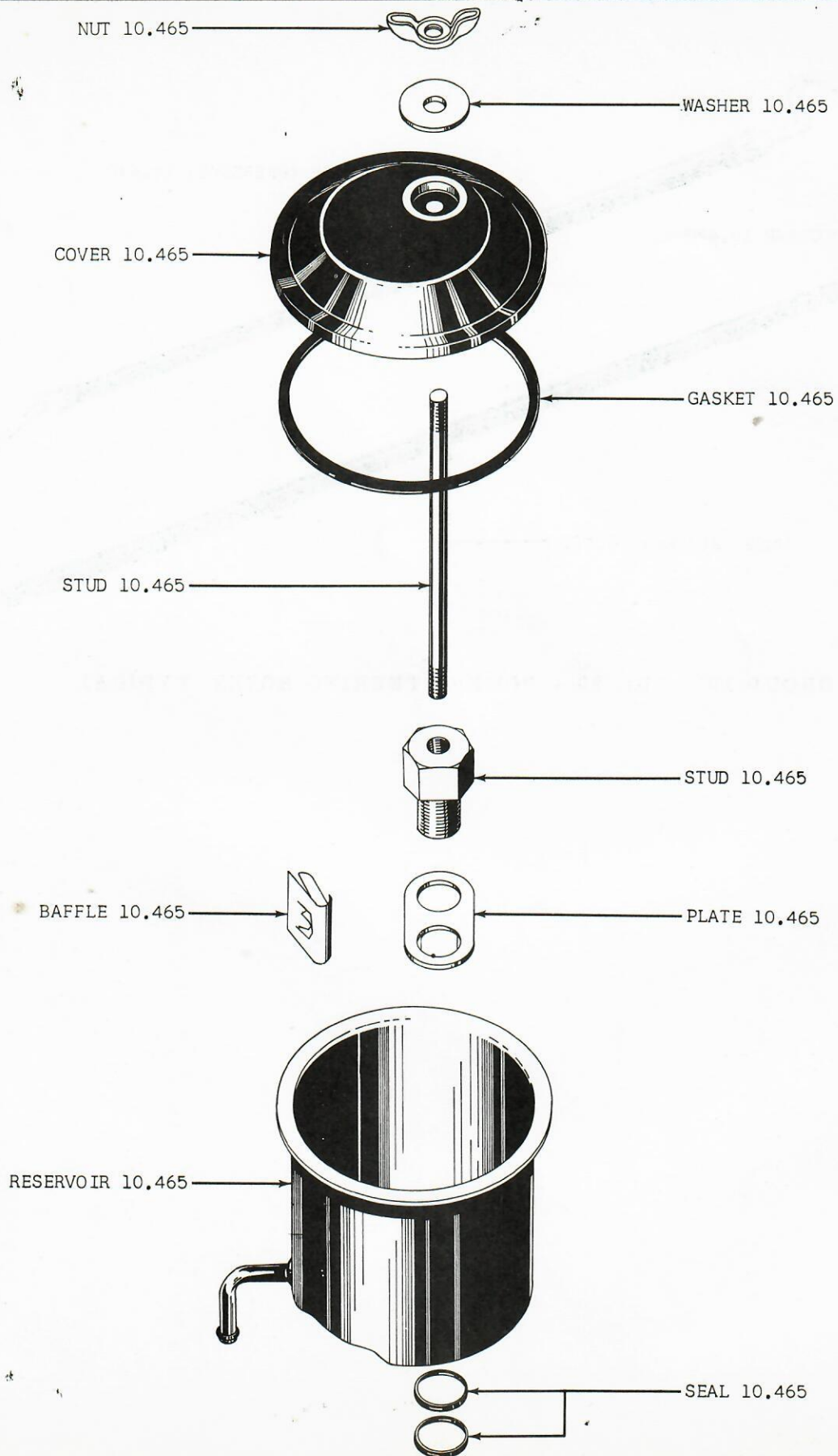
GROUP 10 - FIG. 17 - POWER STEERING POWER CYLINDER (10 WPS): TYPICAL OF 20-80 (WPS)

AMERICAN MOTORS PARTS CATALOG



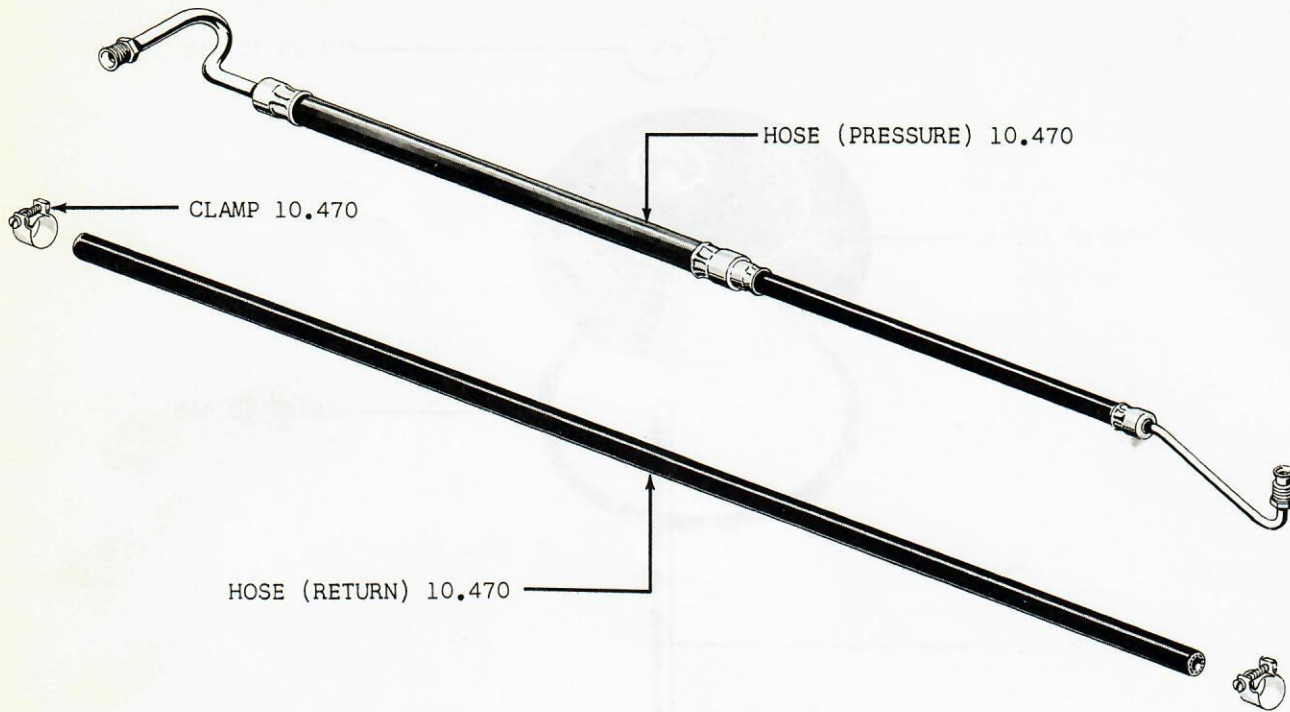
GROUP 10 - FIG. 18 - POWER STEERING PUMP (EATON) 10 (LHD-WPS-LAC): 20-80 (WPS)

AMERICAN MOTORS PARTS CATALOG



GROUP 10 - FIG. 19 - POWER STEERING PUMP RESERVOIR (EATON) 10 (LHD-WPS-LAC): 20-80 (WPS)

AMERICAN MOTORS PARTS CATALOG



GROUP 10 - FIG. 20 - POWER STEERING HOSES TYPICAL